

Rack Mount Patch Panel ODU-L8 (2nd Generation)

Overview

This rack mount fiber patch panel is designed to fit on a standard 19" rack or optical fiber distribution frames, and provide optimal protection for your fiber optic applications. There are two cable entry points on the back of the fiber housing fitted with rubber grommets to protect the fiber optic cable from damage. Upon on customer's request, it can being loaded up to 48 connections, each fiber enclosure includes one cable routing spool and 24 fiber splice tray. Yixing's standard technical specifications are listed below; customer/special requirements are welcomed.



Features

- 2nd Generation: Open design of cable exits for easier access and maintenance.
- Top quality steel with electrostatic painted ensures the strong body and pleasing appearance.
- Easy installations: 19", 21" and 23" wall mounting.
- Easy operations: Drawer style.
- Cable inlet system provided on the rear side which has excellent performances for fixing outdoor cables.
- Fully stable patch panel, no risk of movement.
- Adoptable adapter types: FC, SC, LC.
- Options of Splice trays & fiber management guides.
- Protected patch panel offers secure environment for adapters, patch cords and pigtailed.



Dimensions and Capability

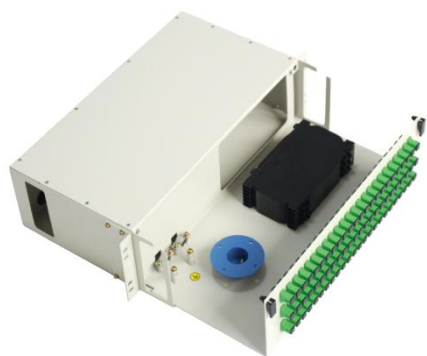
Height	Depth	Width	Capacity	
			FC/SC/ST	LC duplex
1U	300	19"/21"/23"	24	48
2U	300	19"/21"/23"	48	96
3U	300	19"/21"/23"	72	144
4U	300	19"/21"/23"	96	192

* Other height options available upon request.

Operation Conditions	
Temperature	-5°C -- 60°C
Humidity	90% at 30°C
Air Pressure	70kPa – 106kPa

Shipping Information	
Package Contents	Patch panel, 1 unit
Package Dimensions(W*H*D)	It depends on the dimensions of the product
Material	Carton box
Weight	It depends on the dimensions of the product
Lead Time	10-15 working days normally

Part Details



Catalog Number

ODU-L8



Material
M = Metal
S = Stainless steel
O = Other*

Fusion Tube
Y = Yes
N = No

Capacity
Enter the capacity required

Cable Color
Y = Yellow
B = Blue
W = White
O = Orange
G = Green
Z = Brown
S = Slate
R = Red
H = Black
P = Purple
F = Rose
A = Aqua
C = Color coded
N = No requirement

ODU Color
W = White
B = Black
G = Grey
O = Other*

Height
1 = 1U
2 = 2U
3 = 3U
4 = 4U
O = Other*

Pigtail Quantity
Enter the quantity required
N = No requirement

Connector Type
SU = SC UPC
SA = SC APC
FU = FC UPC
FA = FC APC
LU = LC UPC (duplex)
LA = LC APC (duplex)
OO = Other*

Fiber Type	
S = G652D	Single Mode
D = G655	
K = G656	
P = G657A1	
L = G657A2	Multi Mode
B = OM1 (62.5/125µm)	
G = OM1 (50/125µm)	
Q = OM2 (50/125µm)	
W = Om3	
Y = Om4	
O = Other*	
N = No requirement	

Adapter Quantity
Enter the quantity required
N = No requirement

Ordering Example:

ODU-L8M4W2SU4S4YN Metal, Four cores, White ODU, 2U, SC UPC, 4 Adapters, G652D, 4 Pigtails, Yellow cable, No fusion tube

Note: *If the required type of any item is not on the relevant list, please use "O" or "OO" as the red cells indicate, and kindly state the required type in the description of PO.